





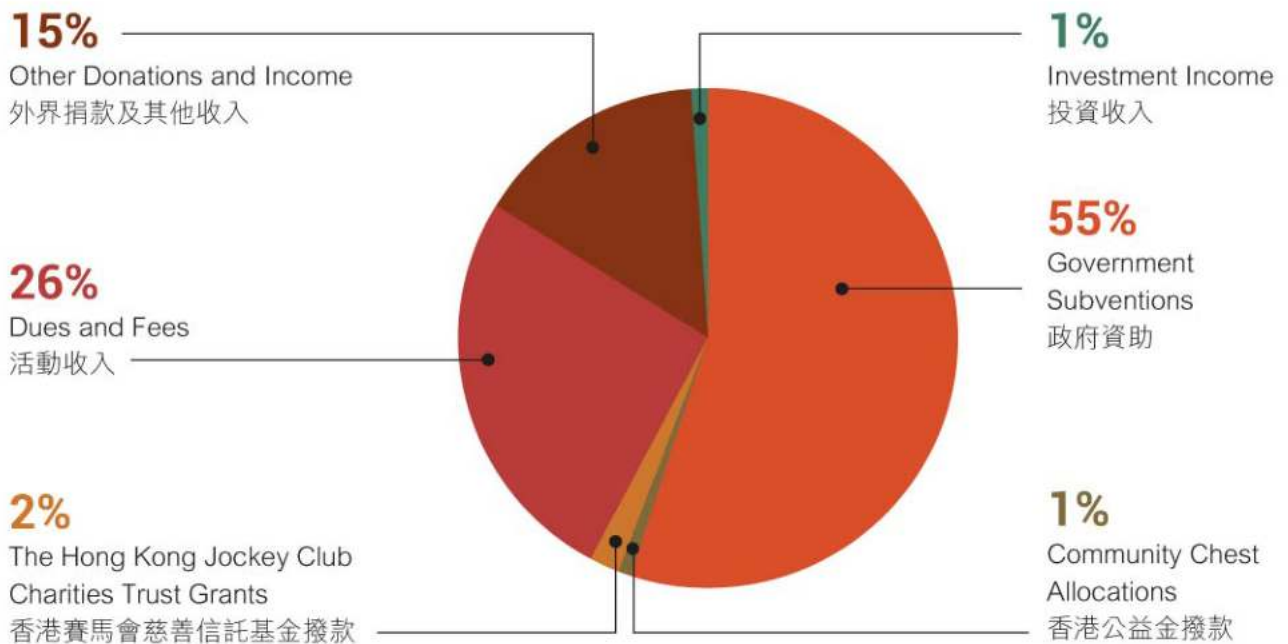
附錄

# Financial Highlights 財務摘要

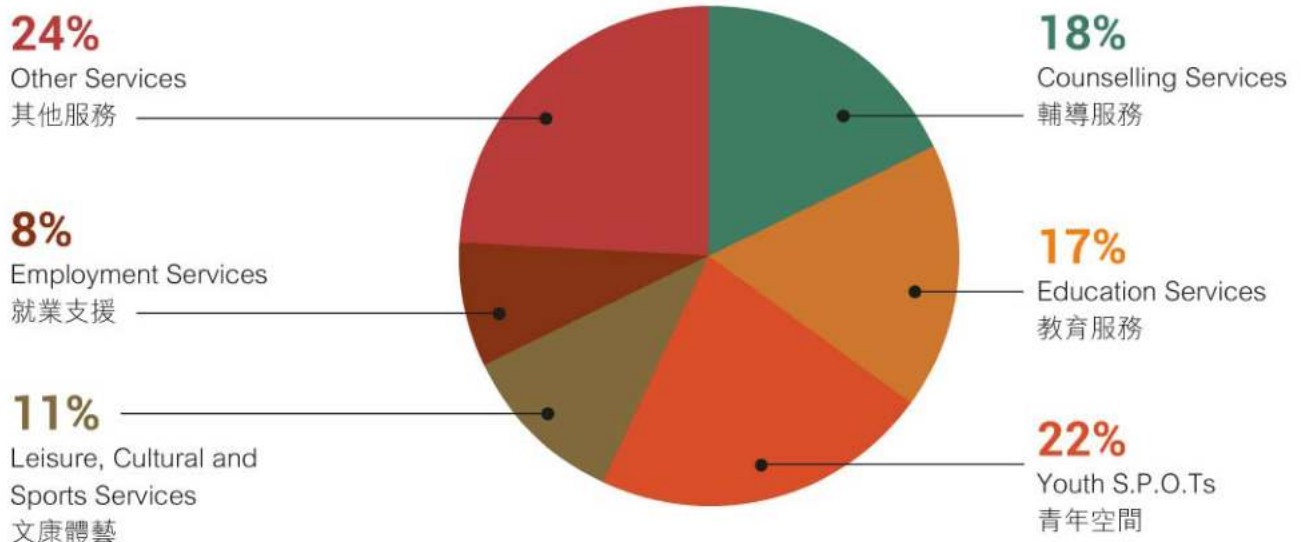
For the Year Ended 31 March 2022 (Consolidated)

截至2022年3月31日年度 (綜合)

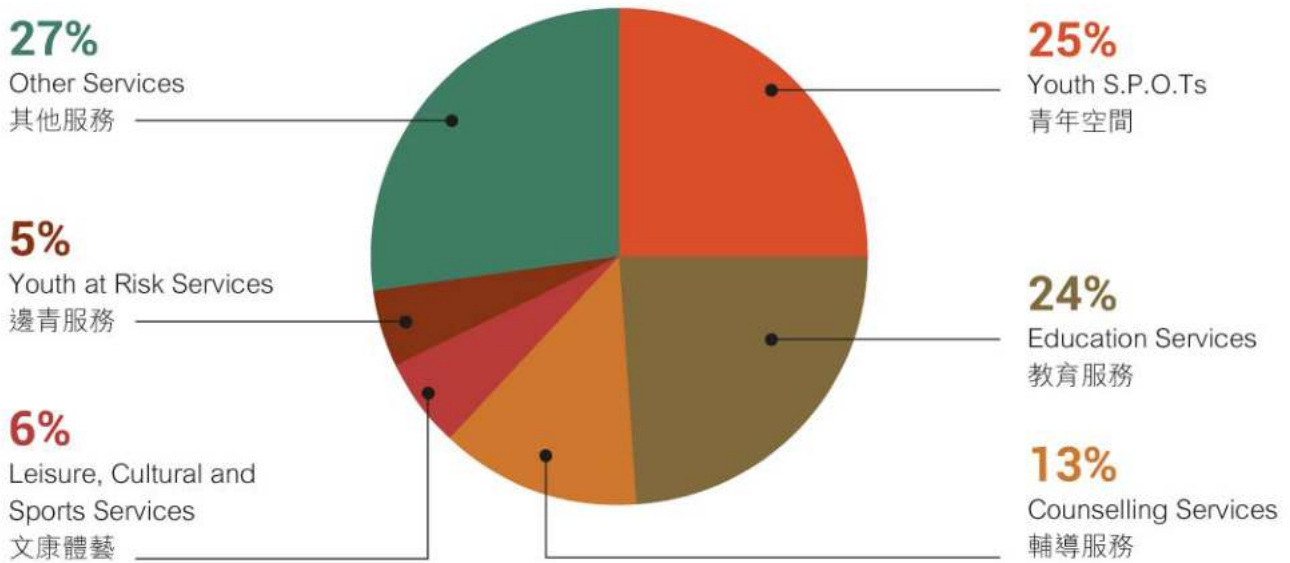
## Analysis of Income 收入來源



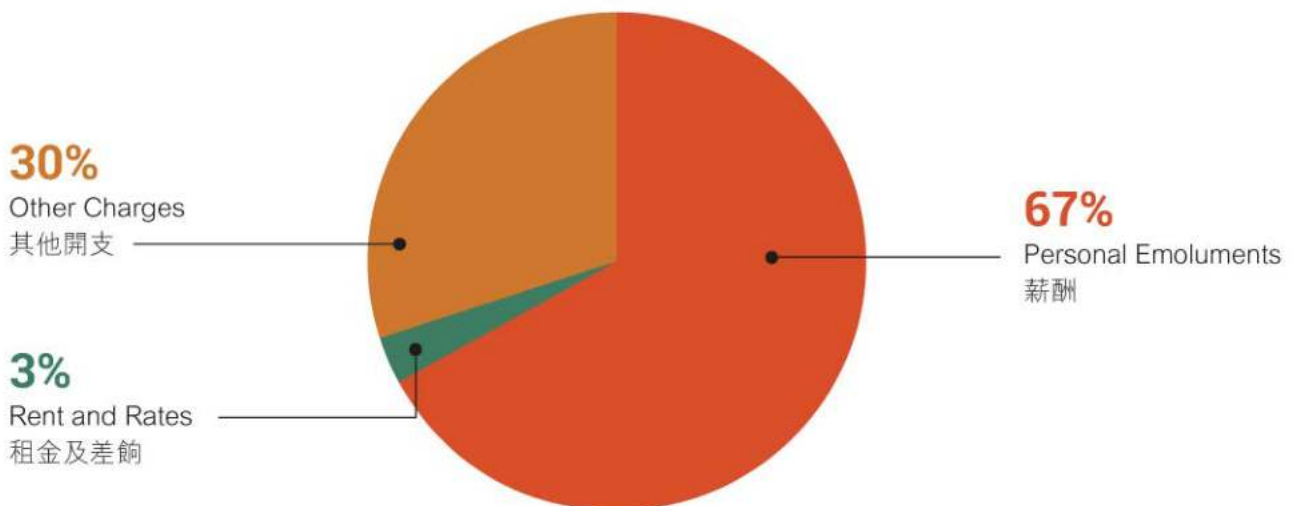
## Income Generated by Service Units 按服務所得之收入



### Operating Expenditure by Services 按服務所投放之開支



### Operating Expenditure by Types 開支項目



# Financial Highlights 財務摘要

## The Hong Kong Federation of Youth Groups Statement of comprehensive income for the year ended 31 March 2022

### 香港青年協會 全面收入表

截至2022年3月31日年度

		2022 HK\$	2021 HK\$
<b>Income</b>	<b>收入</b>		
Government subvention	政府資助	304,458,199	318,016,616
Community Chest allocations	香港公益金撥款	6,923,303	6,460,190
The Hong Kong Jockey Club Charities Trust grants	香港賽馬會慈善信託基金撥款	24,557,502	25,555,819
Beat Drugs Fund recurrent grants allocation	禁毒基金經常性撥款	10,934,139	8,863,901
Quality Education Fund recurrent grants	優質教育基金經常性撥款	3,305,206	1,303,741
Dues and fees	活動收入	166,336,002	88,468,216
Other donations and income	外界捐款及其他收入	76,484,997	63,545,866
Interest income	利息收入	316,307	1,084,513
Dividend income	股息收入	1,103,983	1,434,928
Grants for capital expenditures	非經常性開支撥款	13,506,624	13,875,066
Net exchange gains	匯兌淨收益	-	95,492
Fair value gains on financial assets at fair value through profit or loss	按公允價值計入損益的 金融資產之價值增益	4,181,453	53,560,665
		<b>612,107,715</b>	<b>582,265,013</b>
<b>Expenditure</b>	<b>支出</b>		
Salaries and allowances	僱員薪酬及津貼	335,533,405	329,956,571
Retirement benefit costs	退休金供款	25,781,738	25,750,340
Short-term, low-value and variable lease expenses	短期、低價值及可變資產之租賃支出	2,611,046	2,438,076
Building management fees	物業管理費	4,607,604	4,665,370
Government rent	地租	899,878	745,248
Rates	差餉	2,529,315	2,247,974
Administrative expenses	行政支出	6,228,986	5,046,697
Utilities	公用事業支出	6,987,631	3,989,505
Stores and equipment	文儀及設備	12,875,892	13,007,233
Transport and travelling	運輸及交通	714,045	644,891
Staff amenities	職員福利	556,930	544,329
Audit fee	核數費用	711,200	800,336
Losses on disposal of property, plant and equipment	出售物業、機器及設備之虧損	66,128	14,998
Losses on lease modifications	租賃修改之虧損	-	10,061
Depreciation of property, plant and equipment	物業、機器及設備之折舊	24,288,682	25,932,584
Depreciation of right-of-use assets	使用權資產之折舊	11,668,533	10,675,627
Interest expenses on lease liabilities	租賃負債之利息	1,063,891	1,315,709
Programme expenses	活動支出	126,042,585	76,049,247
Miscellaneous expenses	雜項支出	3,607,933	3,874,489
Net exchange losses	匯兌淨虧損	60,959	-
		<b>566,836,381</b>	<b>507,709,285</b>
<b>Surplus before other comprehensive income</b>	<b>其他全面收入前盈餘</b>	<b>45,271,334</b>	<b>74,555,728</b>
<b>Other comprehensive income for the year</b>	<b>年度其他全面收入</b>	<b>-</b>	<b>-</b>
<b>Surplus after other comprehensive income</b>	<b>其他全面收入後盈餘</b>	<b>45,271,334</b>	<b>74,555,728</b>

**Statement on non-statutory accounts for  
The Hong Kong Federation of Youth Groups  
for the year ended 31 March 2022**

**香港青年協會**

**截至2022年3月31日年度非法定帳目聲明**

The above figures relating to the year ended 31 March 2022 are extracted from the financial statements of The Hong Kong Federation of Youth Groups (the "Federation"), but they do not constitute the Federation's statutory annual financial statements for that year. The financial statements are prepared in English, the Chinese translation is based on the English version. Where any discrepancy arises between the two versions, the English version shall prevail. Further information relating to those statutory financial statements required to be disclosed in accordance with section 436 of the Companies Ordinance is as follows:

The Federation will deliver those financial statements to the Registrar of Companies in due course as required by section 662(3) of, and Part 3 of Schedule 6 to, the Companies Ordinance.

The Federation's auditor has reported on those financial statements. The auditor's report was unqualified; did not include a reference to any matters to which the auditor drew attention by way of emphasis without qualifying its reports; and did not contain a statement under sections 406(2), 407(2) or (3) of the Companies Ordinance.

以上陳列的截至2022年3月31日年度的數字，雖然來源於香港青年協會相關年度的財務報表，但不構成香港青年協會就該年度的法定帳目。有關財務報表以英文編製，中文本乃根據英文本翻譯。如兩個版本有歧異，則以英文本為準。根據公司條例第436條要求披露的與這些法定帳目有關的更多信息如下：

香港青年協會將按照公司條例第662(3)條及附表6第3部的要求，按時向公司註冊處處長遞交有關帳目。

香港青年協會的核數師已就該帳目出具審計報告。該審計報告為無保留意見的審計報告；其中不包含審計師在不出具保留意見的情況下以強調的方式提請使用者注意的任何事項，亦不包含根據公司條例第406(2)，407(2)或(3)條作出的聲明。

**The Incorporated Management Committee of  
HKFYG Lee Shau Kee Primary School  
Statement of comprehensive income  
for the year ended 31 August 2021**

**香港青年協會李兆基小學法團校董會**

**全面收入表**

**截至2021年8月31日年度**

		<b>2021</b>	2020
		<b>HK\$</b>	HK\$
<b>Income</b>	<b>收入</b>		
Government grants	政府資助	<b>51,000,061</b>	52,910,326
Fee collected from students	學生收費	<b>225,835</b>	252,960
Bank interest income	利息收入	<b>596</b>	9,640
Other donations	其他外界捐款	-	76,531
Income from sundry sales	銷售收入	<b>260,033</b>	353,122
Income from Quality Education Fund	優質教育基金撥款	<b>385,325</b>	1,489,042
Programme income	活動收入	<b>29,359</b>	736,691
Sundry income	其他收入	<b>160,722</b>	149,224
		<b>52,061,931</b>	55,977,536
<b>Expenditure</b>	<b>支出</b>	<b>(51,328,359)</b>	(53,655,129)
<b>Total income less expenditure</b>	<b>年度盈餘</b>	<b>733,572</b>	2,322,407
<b>Other comprehensive income for the year</b>	<b>年度其他全面收入</b>	-	-
<b>Total comprehensive income for the year</b>	<b>年度總全面收入</b>	<b>733,572</b>	2,322,407
<b>Representing:</b>	<b>相當於：</b>		
Accumulated fund	累積基金	<b>(1,006,617)</b>	(11,944)
Government grants reserve	政府資助儲備	<b>(619,490)</b>	1,664,839
Teaching and learning enhancement scheme	教與學增進計劃	<b>(580,884)</b>	(341,053)
Deferred capital reserve	非經常性遞延儲備	<b>2,940,563</b>	1,010,565
		<b>733,572</b>	2,322,407

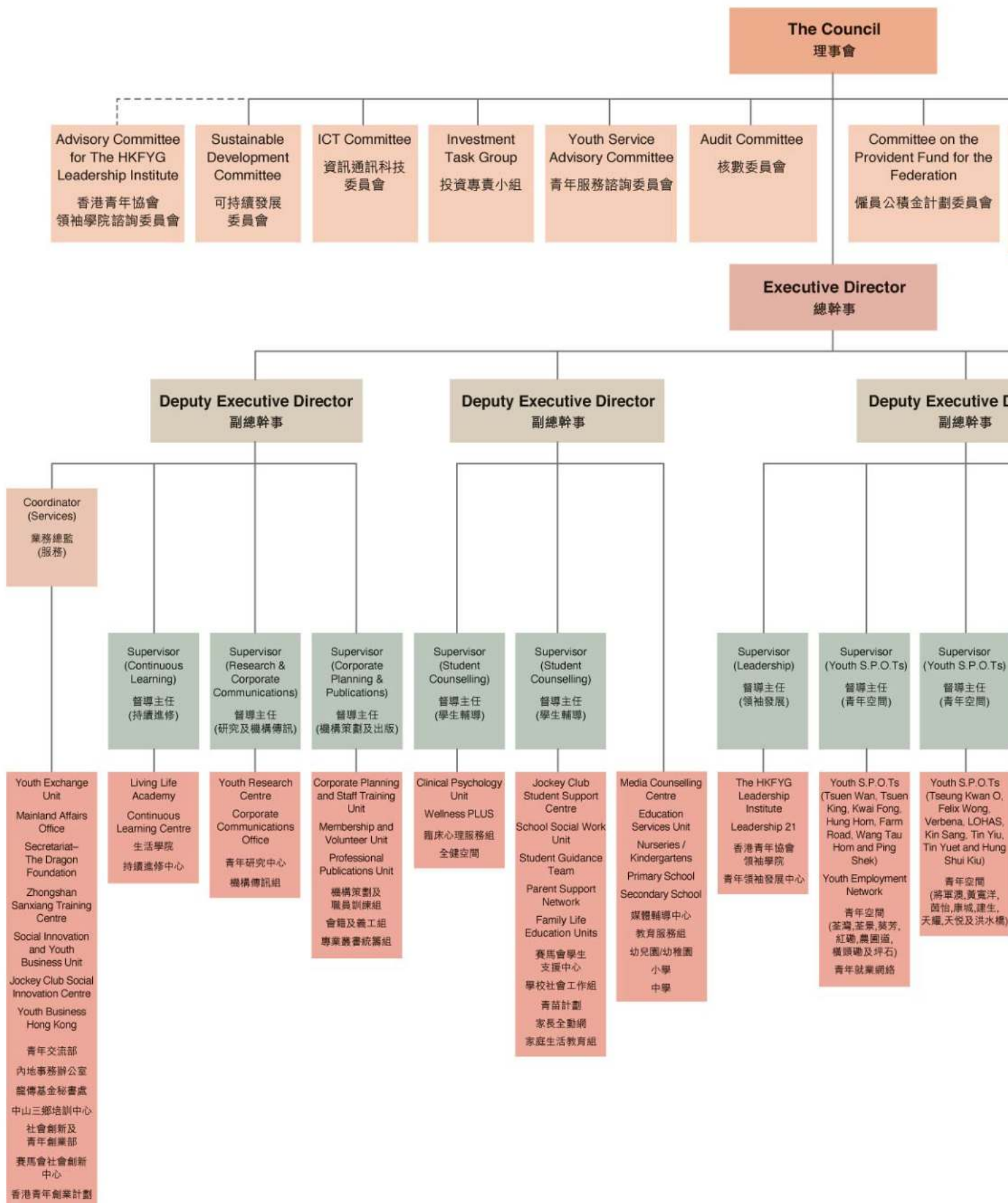
**HKFYG Lee Shau Kee College Limited**  
**Statement of comprehensive income**  
**for the year ended 31 August 2021**

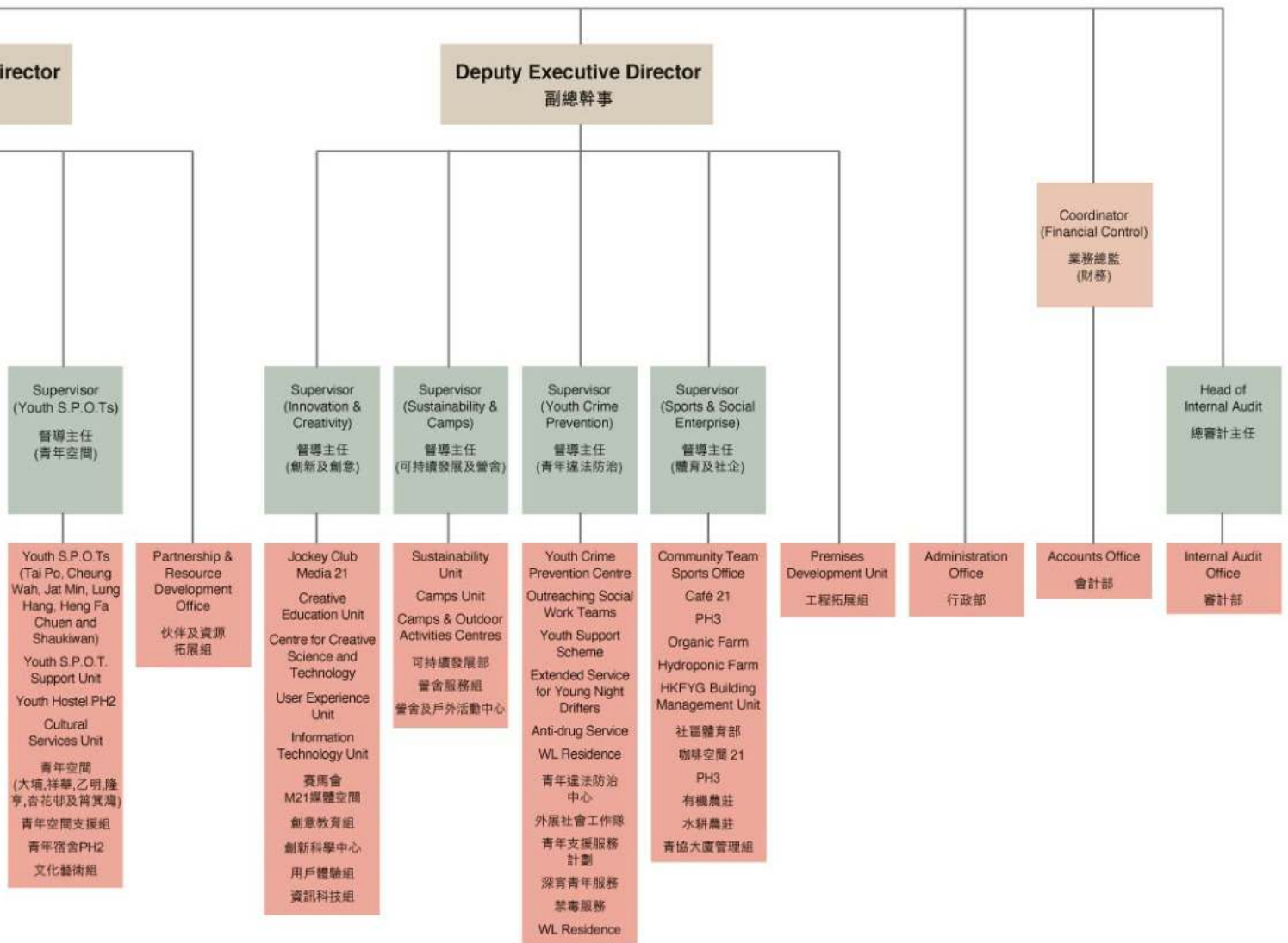
**香港青年協會李兆基書院有限公司**  
**全面收入表**  
**截至2021年8月31日年度**

		2021 HK\$	2020 HK\$
<b>Income</b>	<b>收入</b>		
Donations	外界捐款	498,831	379,511
Government subsidy	政府資助	55,693,376	57,009,549
Interest income	利息收入	215,711	950,367
School fees	學費	19,193,378	19,813,679
Sundry income	其他收入	420,082	879,336
Grants for capital expenditures	非經常性開支撥款	2,176,692	1,754,306
Quality Education Fund	優質教育基金	202,809	-
		<u>78,400,879</u>	<u>80,786,748</u>
<b>Expenditure</b>	<b>支出</b>	<u>(67,288,818)</u>	<u>(67,694,659)</u>
<b>Total income less expenditure</b>	<b>年度盈餘</b>	<b>11,112,061</b>	13,092,089
<b>Other comprehensive income</b>	<b>其他全面收入</b>	-	-
<b>Total comprehensive income for the year</b>	<b>年度總全面收入</b>	<u><b>11,112,061</b></u>	<u>13,092,089</u>
<b>Representing:</b>	<b>相當於：</b>		
Accumulated fund	累積基金	(6,106,623)	10,805,222
Deferred capital reserve	非經常性遞延儲備	2,214,684	9,867
Fee remission reserve	學費減免儲備	-	-
Reserve for construction, maintenance and upgrading of above-standard facilities	用作建設、維修及提升高於標準的設施的儲備	15,000,000	2,277,000
		<u><b>11,112,061</b></u>	<u>13,092,089</u>



# Organisational Chart 組織圖表





## 督導主任名冊

**何永昌先生**

總幹事

**呂慧蓮女士**

副總幹事

**魏美梅女士**

副總幹事

**陳文浩先生**

副總幹事

**徐小曼女士**

副總幹事

**鄧良順先生**

業務總監（服務）

**吳偉玲女士**

業務總監（財務）

**黃瑋珩女士**

總審計主任

**黃秀儀女士**

督導主任（青年空間）

**鄺穎琦女士**

督導主任（青年空間）

**胡偉全先生**

督導主任（青年空間）

**李健樂先生**

督導主任（創新及創意）

**黃好儀女士**

督導主任（領袖發展）

**鍾偉廉先生**

督導主任（機構策劃及出版）

**李少翠女士**

督導主任（青年違法防治）

**魏美華女士**

督導主任（學生輔導）

**余艷芳女士**

督導主任（學生輔導）

**蔡裕星先生**

督導主任（持續進修）

**翁艷夢女士**

督導主任（可持續發展及營舍）

**黃定邦先生**

督導主任（體育及社企）

**張淑鳳女士**

督導主任（研究及機構傳訊）

# 辦事處及服務單位一覽表

**青協網站：hkfyg.org.hk**

**M21 青協網台：M21.hk**

## 總辦事處

### 行政部

香港北角百福道21號香港青年協會大廈21樓

電話：2527 2448 | 傳真：2528 2105

電郵：hq@hkfyg.org.hk

### 會計部

香港北角百福道21號香港青年協會大廈21樓

電話：2527 2448 | 傳真：2528 2105

電郵：hq@hkfyg.org.hk

### 審計部

香港北角百福道21號香港青年協會大廈21樓

電話：2527 2448 | 傳真：2528 2105

電郵：hq@hkfyg.org.hk

## 資訊科技組

香港北角百福道21號香港青年協會大廈21樓

電話：2527 2448 | 傳真：2528 2105

電郵：it@hkfyg.org.hk

## 青年空間

### 青年空間21

香港北角百福道21號香港青年協會大廈地下及1樓

電話：3755 7021 | 傳真：3755 7031

電郵：spot21@hkfyg.org.hk

### 杏花邨青年空間

香港柴灣杏花邨第2期盛泰道100號

停車場大廈西座地下

電話：2557 0142 | 傳真：2898 2595

電郵：hfc@hkfyg.org.hk

### 賽馬會筲箕灣青年空間

香港筲箕灣寶文街1號峻峰花園1 - 2樓

電話：2885 9353 | 傳真：2884 3353

電郵：sw@hkfyg.org.hk

### 賽馬會紅磡青年空間

九龍紅磡馬頭圍道48號家維邨家興樓3 - 5樓

電話：2774 5300 | 傳真：2330 7685

電郵：hhit@hkfyg.org.hk

### 賽馬會農圃道青年空間

九龍土瓜灣農圃道11號地下

電話：2715 0424 | 傳真：2624 4170

電郵：fr@hkfyg.org.hk

### 賽馬會橫頭磡青年空間

九龍黃大仙橫頭磡邨宏光樓地下

電話：2337 7189 | 傳真：2337 1558

電郵：wth@hkfyg.org.hk

### 賽馬會坪石青年空間

九龍觀塘坪石邨坪石酒樓地庫

電話：2325 2383 | 傳真：2351 8941

電郵：ps@hkfyg.org.hk

### 賽馬會將軍澳青年空間

新界將軍澳明德邨明覺樓地下

電話：2623 3121 | 傳真：2623 6121

電郵：tkoit@hkfyg.org.hk

### 康城青年空間

新界西貢康城路1號日出康城首都

電話：2702 2202 | 傳真：2706 0711

電郵：ls@hkfyg.org.hk

### 黃寬洋青年空間

新界將軍澳厚德邨德安樓地下

電話：2706 2638 | 傳真：2706 7396

電郵：fw@hkfyg.org.hk

### 賽馬會茵怡青年空間

新界將軍澳寶泰路8號茵怡花園第2座平台1 - 2樓

電話：2997 0321 | 傳真：2997 0290

電郵：vb@hkfyg.org.hk

### 賽馬會乙明青年空間

新界沙田乙明邨乙明邨街13號地下及1樓

電話：2647 0744 | 傳真：2647 4660

電郵：jm@hkfyg.org.hk

### 隆亨青年空間

新界沙田大圍田心街1號  
隆亨邨隆亨社區中心3樓及5樓  
電話：2698 5565 | 傳真：2602 8484  
電郵：lh@hkfyg.org.hk

### 大埔青年空間

新界大埔寶鄉街2號  
電話：2656 3257 | 傳真：2638 0393  
電郵：tp@hkfyg.org.hk

### 賽馬會祥華青年空間

新界粉嶺祥華邨祥禮樓317 - 332號  
電話：2669 9111 | 傳真：2669 8633  
電郵：chw@hkfyg.org.hk

### 賽馬會葵芳青年空間

新界葵涌葵芳邨葵正樓地下  
電話：2423 1366 | 傳真：2422 2717  
電郵：kfit@hkfyg.org.hk

### 荃灣青年空間

新界荃灣海盛路祈德尊新邨商業中心2樓  
電話：2413 6669 | 傳真：2413 3005  
電郵：tw@hkfyg.org.hk

### 荃景青年空間

新界荃灣荃景圍76 - 84號荃景花園第10座地下及1樓  
電話：2498 3333 | 傳真：2412 5687  
電郵：tk@hkfyg.org.hk

### 賽馬會建生青年空間

新界屯門兆軒苑順生閣地下  
電話：2467 7933 | 傳真：2462 4001  
電郵：ks@hkfyg.org.hk

### 賽馬會天耀青年空間

新界元朗天水圍天耀邨天耀社區中心2 - 4樓  
電話：2445 4868 | 傳真：2445 4049  
電郵：ty@hkfyg.org.hk

### 賽馬會天悅青年空間

新界元朗天水圍天悅邨服務設施大樓2樓  
電話：2445 5777 | 傳真：2445 5656  
電郵：tyt@hkfyg.org.hk

### 洪水橋青年空間

新界元朗洪福邨洪溢樓地下1號舖  
電話：2448 7474 | 傳真：2447 8758  
電郵：hsk@hkfyg.org.hk

### M21媒體服務

#### 賽馬會Media 21媒體空間

香港香港仔石排灣邨商場LG2層2室  
電話：3979 0000 | 傳真：3979 0099  
電郵：enquiry@m21.hk

### 就業支援

#### 青年就業網絡

新界荃灣福來邨永樂樓地下7 - 10號  
電話：3113 7999 | 傳真：3170 6173  
電郵：yen@hkfyg.org.hk

### 社會創新及青年創業部

香港黃竹坑道33 - 35號創協坊11樓B、C、D及E室  
電話：3595 0945 | 傳真：3956 8005  
電郵：sic@hkfyg.org.hk

### 賽馬會社會創新中心

香港黃竹坑道33 - 35號創協坊11樓B、C、D及E室  
電話：3595 0945 | 傳真：3956 8005  
電郵：sic@hkfyg.org.hk

### 香港青年創業計劃

香港黃竹坑道33 - 35號創協坊11樓B、C、D及E室  
電話：3595 0945 | 傳真：3956 8005  
電郵：ybhk@hkfyg.org.hk

### 領袖培訓

#### 香港青年協會領袖學院

新界粉嶺馬會道302號  
電話：2169 0255 | 傳真：2169 0603  
電郵：info@leadershipinstitute.hk

**青年領袖發展中心**

新界粉嶺馬會道302號  
電話：2169 0255 | 傳真：2169 0603  
電郵：leadership21@hkfyg.org.hk

**義工服務****會籍及義工組**

九龍觀塘創業街15號萬泰利廣場29樓C室  
電話：3691 0200  
電郵：membership@hkfyg.org.hk

**青年義工網絡**

九龍觀塘創業街15號萬泰利廣場29樓C室  
電話：3691 0200  
電郵：yvn@hkfyg.org.hk

**「Open喻」義工中心**

服務網站：www.openup.hk

**邊青服務****青年違法防治中心**

熱線：8100 9669 | 電郵：ycpc@hkfyg.org.hk

**荃灣及葵涌外展社會工作隊**

新界葵涌大窩口邨富貴樓地下109 - 112號  
電話：2487 6151 | 傳真：2423 8186  
電郵：osw-tk1@hkfyg.org.hk

**西貢及黃大仙外展社會工作隊**

新界將軍澳寶林邨寶寧樓320 - 322室  
電話：2701 8866 | 傳真：2706 2206  
電郵：osw-skwts@hkfyg.org.hk

**深宵青年服務**

新界西貢康城路1號日出康城首都康城青年空間  
電話：2702 2202 | 傳真：2706 0711  
電郵：ynd@hkfyg.org.hk

**青年支援服務計劃**

新界屯門蝴蝶邨蝴蝶灣社區中心3樓  
電話：2396 4711 | 傳真：2395 9543  
電郵：yss@hkfyg.org.hk

**抗毒服務**

新界屯門蝴蝶邨蝴蝶灣社區中心3樓  
電話：2473 0133 | 傳真：2473 0181  
電郵：ad@hkfyg.org.hk

**輔導服務****臨床心理服務組**

香港北角百福道21號香港青年協會大廈1樓  
電話：3755 7021 | 傳真：3755 7031  
電郵：wp@hkfyg.org.hk

**全健空間（香港）**

香港北角百福道21號香港青年協會大廈1樓  
電話：3755 7021 | 傳真：3755 7031  
電郵：wp@hkfyg.org.hk

**全健空間（九龍）**

九龍大角咀必發道54號1樓  
電話：3422 3161 | 傳真：3422 3165  
電郵：wmc@hkfyg.org.hk

**全健空間（新界西）**

新界荃灣海盛路祈德尊新邨商業中心3樓  
電話：3755 7021 | 傳真：3755 7031  
電郵：wp@hkfyg.org.hk

**全健空間（新界東）**

新界粉嶺祥華邨祥禮樓317 - 332號  
電話：3755 7021 | 傳真：3755 7031  
電郵：wp@hkfyg.org.hk

**賽馬會學生支援中心**

九龍大角咀必發道54號地下至1樓及4 - 5樓  
電話：3422 3161 | 傳真：3422 3165  
電郵：ssc@hkfyg.org.hk

**學校社會工作組**

香港北角百福道21號香港青年協會大廈21樓  
電話：2395 0161 | 傳真：2395 8592  
電郵：ssw@hkfyg.org.hk

### 青苗計劃 (小學服務)

九龍大角咀必發道54號4樓  
電話：2395 0162 | 傳真：2787 1479  
電郵：sgt@hkfyg.org.hk

### 青苗計劃 (幼稚園服務)

九龍大角咀必發道54號4樓  
電話：2395 0162 | 傳真：2787 1479  
電郵：sgt@hkfyg.org.hk

### 媒體輔導中心

九龍大角咀必發道54號地下  
電話：2788 3433 | 傳真：2776 2125  
電郵：mcc@hkfyg.org.hk

### 媒體輔導中心 (關心一線)

服務熱線：2777 8899

### 媒體輔導中心 (Open嘜網上平台)

服務網站：www.openup.hk

### 媒體輔導中心 (uTouch網上青年外展服務)

新界荃灣海盛路祈德尊新邨商業中心3樓  
電話：2788 3444 | 傳真：2776 2125  
電郵：utouch@hkfyg.org.hk

### 教育服務

#### 教育服務組

香港北角百福道21號香港青年協會大廈21樓  
電話：3755 7107 | 傳真：3755 7155  
電郵：education@hkfyg.org.hk

### 青樂幼稚園 / 青樂幼兒園

香港西灣河街129號利基大廈地下  
電話：2886 8856 | 傳真：2886 8923  
電郵：cl-swh@hkfyg.org.hk

### 青樂幼稚園 (油麻地) / 青樂幼兒園 (油麻地)

九龍油麻地渡船街28號寶時商業中心地下8 - 13號  
電話：2385 6868 | 傳真：2385 6630  
電郵：cl-ymt@hkfyg.org.hk

### 鄭堅固幼稚園

九龍牛頭角彩興路8號彩德邨彩誠樓1號舖  
電話：2385 2622 | 傳真：2385 3326  
電郵：kkc@hkfyg.org.hk

### 李兆基小學

新界元朗天水圍天榮路11號  
電話：2448 1011 | 傳真：2448 1823  
電郵：lskps@hkfyg.org.hk

### 李兆基書院

新界元朗天水圍天葵路12號  
電話：2146 1128 | 傳真：2146 1662  
電郵：hlc@hlc.edu.hk

### 持續進修中心

香港銅鑼灣禮頓道119號公理堂大樓21 - 23樓  
電話：2130 4000 | 傳真：2130 4030  
電郵：clc@hkfyg.org.hk

### 生活學院

香港銅鑼灣禮頓道119號公理堂大樓21 - 23樓  
電話：2130 4000 | 傳真：2130 4030  
電郵：lla@hkfyg.org.hk

### 家長服務

#### 家長全動網

九龍觀塘坪石邨翠石樓地下125 - 132室  
電話：2402 9230 | 傳真：2402 9295  
電郵：psn@hkfyg.org.hk

### 家庭生活教育組 (東區及灣仔)

香港筲箕灣寶文街1號峻峰花園1 - 2樓  
賽馬會筲箕灣青年空間  
電話：2567 5730 | 傳真：2884 3353  
電郵：psn-ew@hkfyg.org.hk

### 家庭生活教育組 (九龍城區)

九龍紅磡馬頭圍道48號家維邨家興樓3 - 5樓  
賽馬會紅磡青年空間  
電話：2774 3083 | 傳真：2330 7685  
電郵：psn-knc@hkfyg.org.hk

**家庭生活教育組（大埔及北區）**

新界粉嶺祥華邨祥禮樓317 - 332號  
 賽馬會祥華青年空間  
 電話：2658 3097 | 傳真：2669 8633  
 電郵：psn-tpn@hkfyg.org.hk

**家庭生活教育組（荃灣及葵青區）**

新界荃灣海盛路祈德尊新邨商業中心2樓  
 荃灣青年空間  
 電話：2490 2662 | 傳真：2413 3005  
 電郵：psn-twkt@hkfyg.org.hk

**創意交流****創意教育組**

新界白石角香港科學園5W座2樓211室  
 電話：2561 6149 | 傳真：2565 8345  
 電郵：ce@hkfyg.org.hk

**創新科學中心**

新界白石角香港科學園5W座2樓211室  
 電話：2561 6149 | 傳真：2565 8345  
 電郵：ce@hkfyg.org.hk

**青年交流部**

新界粉嶺馬會道302號  
 電話：3586 8448 | 傳真：3586 8311  
 電郵：ye@hkfyg.org.hk

**內地事務辦公室**

新界粉嶺馬會道302號  
 電話：3705 1501 | 傳真：3956 8005  
 電郵：mao@hkfyg.org.hk

**中山三鄉青年培訓中心**

中國廣東省中山市三鄉鎮雍陌村學堂坊巷21號之二  
 電話：3586 8448 | 傳真：3586 8311  
 電郵：ye@hkfyg.org.hk

**文康體藝****文化藝術組**

新界大埔寶鄉街2號香港青年協會青年宿舍PH2 2樓  
 電話：2395 5753 | 傳真：2638 0393  
 電郵：csu@hkfyg.org.hk

**社區體育部**

新界荃灣海盛路祈德尊新邨商業中心3樓  
 電話：3611 6670 | 傳真：3108 4668  
 電郵：cts@hkfyg.org.hk

**荃灣室內體育中心**

新界荃灣海盛路祈德尊新邨商業中心3樓  
 電話：2413 6669 | 傳真：2413 3005  
 電郵：twisc@hkfyg.org.hk

**營舍服務組**

新界西貢大網仔道  
 電話：2395 5759 | 傳真：2664 4776  
 電郵：camp@hkfyg.org.hk

**賽馬會西貢戶外訓練營**

新界西貢大網仔道  
 電話：2792 2727 | 傳真：2792 6363  
 電郵：otc@hkfyg.org.hk

**南丫青年營**

香港南丫島榕樹灣郵局信箱32號  
 電話：2982 1929 | 傳真：2982 1907  
 電郵：lyc@hkfyg.org.hk

**赤柱戶外訓練營**

香港赤柱聖士提反灣  
 電話：2813 8886 | 傳真：2664 4776  
 電郵：s@hkfyg.org.hk

**大美督戶外活動中心**

新界大埔汀角路船灣淡水湖主壩  
 電話：2664 4686 | 傳真：2664 4776  
 電郵：tmt@hkfyg.org.hk

**香港青年協會領袖學院 - 營舍**

新界粉嶺馬會道302號  
 電話：2169 0255 | 傳真：2169 0603  
 電郵：info@leadershipinstitute.hk



## 研究出版

### 青年研究中心

香港北角百福道21號香港青年協會大廈4樓  
電話：3755 7022 | 傳真：3755 7200  
電郵：yr@hkfyg.org.hk

### 專業叢書統籌組

香港北角百福道21號香港青年協會大廈21樓  
電話：3755 7108 | 傳真：3755 7155  
電郵：cps@hkfyg.org.hk

## 專項服務

### 香港青年協會青年宿舍PH2

新界大埔寶鄉街2號  
電話：2656 0009 | 傳真：2638 0393  
電郵：ph2@hkfyg.org.hk

### WL Residence

香港上環永利街5號及7 - 9號  
電話：2915 5532 | 電郵：wlr@hkfyg.org.hk

### 咖啡空間21

香港北角百福道21號香港青年協會大廈地下  
電話：3188 5792 | 傳真：3188 5793  
電郵：cafe21@hkfyg.org.hk

### PH3

香港灣仔皇后大道東186、188及190號3樓  
電話：5933 6323 | 電郵：ph3@hkfyg.org.hk

### 有機農莊

新界元朗八鄉河背水塘家樂徑1號  
電話：2838 4808 | 傳真：2488 9034  
電郵：organicfarm@hkfyg.org.hk

### 水耕農莊

新界大埔大窩西支路泰亨村沙梨園地段7號  
電話：9333 2551 | 電郵：hf@hkfyg.org.hk

### 龍傳基金秘書處

新界粉嶺馬會道302號  
電話：2811 2779 | 傳真：2811 2669  
電郵：info@dragonfoundation.net

## 拓展及支援

### 伙伴及資源拓展組

香港北角百福道21號香港青年協會大廈21樓  
電話：3755 7103 | 傳真：3755 7155  
電郵：partnership@hkfyg.org.hk

### 機構策劃及職員訓練組

香港北角百福道21號香港青年協會大廈20樓  
電話：3755 7088 | 傳真：3755 7055  
電郵：td@hkfyg.org.hk ; cp@hkfyg.org.hk

### 機構傳訊組

香港北角百福道21號香港青年協會大廈21樓  
電話：3755 7022 | 傳真：3755 7200  
電郵：cco@hkfyg.org.hk

### 可持續發展部

香港北角百福道21號香港青年協會大廈21樓  
電話：3755 7110 | 傳真：3755 7155  
電郵：sst@hkfyg.org.hk

### 青年空間支援組

香港北角百福道21號香港青年協會大廈20樓  
電話：3755 7072 | 傳真：3755 7055  
電郵：spot@hkfyg.org.hk

### 用戶體驗組

香港香港仔石排灣邨商場LG2層2室  
電話：3905 1546 | 電郵：ue@hkfyg.org.hk

### 工程拓展組

香港北角百福道21號香港青年協會大廈21樓  
電話：3755 7092 | 傳真：3755 7155  
電郵：pd@hkfyg.org.hk

### 青協大廈管理組

香港北角百福道21號香港青年協會大廈21樓  
電話：3755 7098 | 傳真：3755 7155  
電郵：bm@hkfyg.org.hk



## Donation / Sponsorship Form 捐款表格

Please tick (✓) boxes as appropriate 請於合適選項格內，加上“✓”：  
I am / My organisation is interested in donating 本人/本機構 願意捐助

- HK\$10,000    HK\$5,000    HK\$2,000  
 HK\$1,000    HK\$800    HK\$500  
 HK\$200    Other 其他 HK\$ \_\_\_\_\_

Receipts will be issued for all donations over HK\$100 and are tax-deductible.  
所有港幣100元以上捐款，將獲發收據作申請扣稅之用。

### Cheque 支票

Cheque No. 支票號碼 \_\_\_\_\_

Crossed cheques should be made payable to: **The Hong Kong Federation of Youth Groups**  
劃線支票抬頭祈付：香港青年協會

### Direct Transfer 銀行轉賬

Direct transfer to the **Hang Seng Bank, account no.**

存款予本會恒生銀行賬戶：773-027743-001

Internet Banking “Bill Payment” or “Charity Donation” Services

本地銀行網上理財「繳費」或「慈善捐款」

Date of Payment 轉賬日期 \_\_\_\_\_

Please use your contact number as the bill account number (if applicable). If you need a receipt, please send us the bank's receipt / transaction record together with this form. 請以您的電話號碼作為賬單/賬戶號碼(如適用)，並將存款證明/交易紀錄連同本表格交回。

Monthly direct debit (We will send you the Authorization Form.) 銀行戶口每月自動轉賬 (表格將另函寄上。)

### PPS Payment 繳費靈

PPS Payment (The merchant code for The Hong Kong Federation of Youth Groups is 9345. Please use your contact number as the bill account number.)

繳費靈 (本會登記商戶編號：9345；請以您的電話號碼作為賬單/賬戶號碼)

Date of Payment 轉賬日期 \_\_\_\_\_

### Credit Card 信用卡

VISA    MasterCard    One-off Donation 單次捐款    Regular Monthly Donation 每月捐款

Card Number 信用卡號碼	Expiry Date 有效期至 / (MM月/YY年)	Signature of Card Holder 持卡人簽署
Name of Card Holder 持卡人姓名	HK 港幣 \$	

### Donor Information 捐款者資料

Name of Donor / Organisation 捐款人 / 機構 \_\_\_\_\_

Name of Contact Person (if applicable) 聯絡人姓名 (如適用) \_\_\_\_\_

Telephone / Mobile 電話 \_\_\_\_\_

Fax 傳真 \_\_\_\_\_

Email 電郵 \_\_\_\_\_

Donation receipt? 捐款收據?    Yes 是    No 否   Name for Receipt 收據抬頭 \_\_\_\_\_

Address 郵寄地址 \_\_\_\_\_

I / My organisation wish(es) to remain anonymous. 青協毋須就是項捐款於任何電子及印刷品鳴謝本人/本機構。

The Hong Kong Federation of Youth Groups (the Federation) respects the privacy of individuals. We do our best to ensure the collection, use, storage, transfer and disclosure of your personal data comply with the Personal Data (Privacy) Ordinance.

You have the right to access and correct your personal data and request a copy of the said data. You can make your request to [personaldata@hkfyg.org.hk](mailto:personaldata@hkfyg.org.hk). Your request will be answered in 40 days. A fee may be charged for processing a data access request.

Your personal data may be used for purposes related to participation in various programmes and activities, issuing of receipts, collection of user feedback, conduct of analysis, and any other initiatives related to the aims and objectives of the Federation. Please indicate below if you agree to being contacted for these purposes. Should you wish to stop receiving news and information from the Federation and its service units, please contact us at [unsubscribe@hkfyg.org.hk](mailto:unsubscribe@hkfyg.org.hk).

香港青年協會 (青協) 非常重視個人私隱，並確保轄下之服務於任何情況下收集、使用、儲存、轉移及查閱個人資料之程序均符合香港的《個人資料(私隱)條例》的要求。您有權要求查閱和改正所提供的個人資料及索取有關資料的複本。

如需查詢或改正個人資料，可電郵至 [personaldata@hkfyg.org.hk](mailto:personaldata@hkfyg.org.hk)。在收到您提出的要求後，本會將在40天內給予回覆，並將可能就此收取合理的費用。

您提供之個人資料將用作參與活動的相關用途、簽發收據、收集意見、資料分析，及其他配合本會宗旨及使命的事項。請在下面的方格上填上劃號，表示您是否願意收到本會通訊。如需取消接收青協及有關單位的資訊，請電郵至 [unsubscribe@hkfyg.org.hk](mailto:unsubscribe@hkfyg.org.hk) 與青協職員聯絡。

I / We do not wish to receive communication through the channels below \*:

本人 / 本機構 不希望從以下渠道接收通訊 \*:

Email 電郵    Mail 郵寄    Phone 電話

### e-Donation 電子捐款



PayMe



Alipay HK 支付寶HK



Octopus 八達通



FPS 轉數快

### e-Giving



[giving.hkfyg.org.hk](http://giving.hkfyg.org.hk)

For donation receipt, please send us the screenshot of the donation transaction record with the name for the receipt, contact number and address via text message, fax, email or by post.

請將捐款截圖，連同收據抬頭、聯絡電話及郵寄地址，以短訊、傳真、電郵或郵寄方式交回本會，以便發放捐款收據。

Please send this form with your crossed cheque/ the bank's receipt / screenshot of the donation record to:  
捐款表格、劃線支票/銀行存款證明/捐款截圖，敬請寄回：

Partnership and Resource Development Office  
The Hong Kong Federation of Youth Groups  
21/F, The Hong Kong Federation of Youth Groups Building  
21 Pak Fuk Road, North Point, Hong Kong

香港北角百福道21號  
香港青年協會大廈21樓  
香港青年協會「伙伴及資源拓展組」

Tel 電話: 3755 7103 / 9455 4305 (WhatsApp)

Fax 傳真: 3755 7155

Email 電郵: [partnership@hkfyg.org.hk](mailto:partnership@hkfyg.org.hk)



# Acknowledgments 鳴謝

The Federation would like to express its most sincere thanks to the following donors and supporters for their generous help during the year 2021-22.

本會謹向二零二一至二二年度慷慨捐助和支持本會的社會各界人士和團體，致以謝意。

(in alphabetical order 按英文字母順序排列)

## Major Collaborators, Partners and Sponsors

Airport Authority Hong Kong  
 Au Bak Ling Charity Trust  
 Beat Drugs Fund  
 Chan Cheung Mun Chung Charitable Fund  
 Chief Executive's Community Project List  
 CLP Power Hong Kong Ltd.  
 Coca-Cola Foundation, The  
 Commerce and Economic Development Bureau  
 Community Chest of Hong Kong, The  
 Education Bureau  
 Greater Bay Area Homeland Youth Community Foundation  
 Home Affairs Bureau (renamed as Home and Youth Affairs Bureau from 1 July 2022)  
 Hong Kong Council of Social Service, The  
 Hong Kong Housing Society  
 Hong Kong Jockey Club Charities Trust, The  
 Hongkong and Shanghai Banking Corporation Ltd., The  
 Hongkong Bank Foundation  
 Innovation and Technology Commission  
 Innovation and Technology Fund  
 King's Flair Development Ltd.  
 Leisure and Cultural Services Department  
 Lo Kwee Seong Foundation  
 Lotteries Fund  
 Partnership Fund for the Disadvantaged  
 Rosewood Hotel Group  
 Simon K.Y. Lee Foundation  
 Sir David Trench Fund for Recreation  
 Social Innovation and Entrepreneurship Development Fund  
 Social Welfare Department  
 Standing Committee on Language Education and Research  
 Tin Ka Ping Foundation  
 Tourism Commission

## Businesses

2 Good Bakery  
2 Square Metres  
2Bliss Studio Ltd.  
360 Holidays Ltd.  
3D-GOLD Jewellery (HK) Ltd.  
3D-GOLD Management Services Ltd.  
4M Industrial Development Ltd.  
4N Ltd.  
759 Store  
8 Star Property Agency Ltd.  
Able Fancy Development Ltd.  
Access Academic Consultancy Ltd.  
Access Universe  
ACS Tech System Ltd.  
AdTactics Marketing International Ltd.  
Advance Multimedia Co. Ltd.  
Amazing Life Development Co., Ltd.  
American Express Hong Kong  
Anglia Design Ltd.  
Aromatherapy Co. HK Ltd., The  
Artspirit Creative Co. Ltd.  
Asian Academy for Sports and Fitness Professionals Ltd.  
Avoid Obvious Architects  
Babyboom Learning Co. Ltd.  
Bank of China Group Investment Ltd.  
BBPOS Ltd.  
Beacon Group Ltd.  
Big Red Design Ltd.  
BioEm Air Sanitizing Technology Co. Ltd.  
BNP Paribas  
Boaz International Education Institute Ltd.  
Boogie Dance Studio  
Boutir Ltd.  
Bright Future Pharmaceutical Laboratories Ltd.  
Brilliant Education Expert Ltd.  
BSL Containers Ltd.  
Burlington Hotels Ltd., The  
C & S Smartsafe Ltd.  
Canaan Creative Education  
Capmi Technology Ltd.  
Cargo Services Far East Ltd.  
Caring Wheelchair and Limousine Services Ltd.  
Casa Republic (International) Ltd.  
Castle Service Ltd.  
Charming Accounting and Secretarial Service Co.  
Cheongsam Forever  
Chi Fung Engineering Co. Ltd.  
China Equipment Engineering Co. Ltd.  
Chinachem Group  
Chor Kee Construction Materials  
CITIC Telecom International CPC Ltd.  
Clarins Ltd.  
Clearwater Bay Golf and Country Club, The  
ClusterTech Ltd.  
Coffee Terrace, The  
Com We Co. Ltd.  
Come Know (Asia) Ltd.  
Conduct Chinese Medicine Clinic Ltd.  
Council for International Cultural Exchange  
Cowboy Food Co. Ltd.  
Creativo Design & Contracting Co., Ltd.  
Create Studio Ltd.  
Cross International Ltd.  
CW CPA  
Descente Ltd.  
Direct Marketing of Asia Ltd.  
DMT Direct (HK) Ltd.  
DNT FPV Technology Co. Ltd.  
Don Nelson Recruitment Ltd.  
Double O  
DT Digital  
E TAG Ltd.  
e-banner Ltd.  
Eco-Greenergy Ltd.  
EcoSage Ltd.

Eidealink Ltd.  
 Eidealink Public Relations Ltd.  
 Ensec Solutions Hong Kong Ltd.  
 Equity Financial Press Ltd.  
 Eugene Group Ltd.  
 Fai Gor's Kitchen  
 Farmacy HK Ltd.  
 Fat Kee Noodle Factory Ltd.  
 Feva Works IT Education Centre  
 Find Solution Ai Ltd.  
 Foon Tai Trading Co. Ltd.  
 Fosun Hani Securities Ltd.  
 Fosun International Ltd.  
 Frame & Fame Personal Branding  
 Gabriel Technology (HK) Ltd.  
 Galaxy Engineering Holding Co. Ltd.  
 GCS Ltd.  
 Gear Workshop  
 Genesis Block Ltd.  
 Genki Sushi Hong Kong Ltd.  
 Getz Bros. & Co. (Hong Kong) Ltd.  
 Global Investigation and Security Consultancy Ltd.  
 GLOW Makeup Academy by Janice Lam  
 GOGO X  
 Golden Key Mini-Storage Group Ltd.  
 Goldex Information Technology Ltd.  
 Goldmax Immigration Consulting Co., Ltd.  
 Goodwill Management Ltd.  
 Green Island Cement Co., Ltd.  
 Green ONI Ltd.  
 Hair Rejuvenation Co., Ltd.  
 Hang Lung Properties Ltd.  
 Hang Seng Bank Ltd.  
 HDcourse Ltd.  
 Heart-to-Heart Life Counselling and Education Services Ltd.  
 Health Advances Asia Ltd.  
 Henderson Land Development Co. Ltd.  
 Herbs Generation International Ltd.  
 Hexa Pharmaceutical Ltd.  
 HGC Global Communications Ltd.  
 Hide and Seek Tour  
 Ho & Partners Architects Engineers & Development Consultants Ltd.  
 Ho Win Roasted Meat Restaurant  
 Holistic Education Ltd.  
 Hon Sum Beauty Centre  
 Hong Kong Art Development Co. Ltd.  
 Hong Kong Disneyland  
 Hong Kong Exchanges and Clearing Ltd.  
 Hong Kong Ferry (Holdings) Co. Ltd.  
 Hong Kong Ferry Finance Co. Ltd.  
 Hong Kong Golf Club, The  
 Hong Kong Health Accessible Limousine Co. Ltd.  
 Hong Kong Jockey Club, The  
 Hong Kong Moving Service Co.  
 Hong Kong Professional Training Centre  
 Hong Kong Trainers Centre  
 Hong Kong Tramways, Ltd.  
 Hong Yip Service Co. Ltd.  
 Hongkong Electric Co., Ltd., The  
 Hongkong Land Ltd.  
 Hung Fat Ho Food Ltd.  
 Hutchison Logistics (HK) Ltd.  
 iDDY.ai  
 Idynamic Media Co. Ltd.  
 In N Out International Corporate Ltd.  
 Industrial and Commercial Bank of China (Asia) Ltd.  
 Infinitus Plaza  
 Inno-Bag Ltd.  
 InnoEdge Consulting Ltd.  
 Innopage Ltd.  
 J.P. Morgan  
 JAG Solutions Ltd.  
 Jeunesse Global Group Ltd.  
 JMB Construction Co. Ltd.  
 Joint Profit

Juicyapp  
 K&K Management Services Ltd.  
 K11 Concepts Ltd.  
 Kai Shing Management Services Ltd.  
 Kaitelynn Mak Chinese Culture Workshop  
 Kam Kee Holdings Ltd.  
 Kerry Holdings Ltd.  
 Keymax Technology (Hong Kong) Ltd.  
 King Force Security Ltd.  
 King's Flair Development Ltd.  
 Kirin Catering Groups Holdings Co. Ltd.  
 KPC International Ltd.  
 Kwok, Ng & Chan, Solicitors & Notaries  
 L & K Group Holdings Ltd.  
 Lady M Confections Co., Ltd.  
 Land Master & Associates Valuers Ltd.  
 Lantau Tours Ltd.  
 Lead On Asia Ltd.  
 Lee Kum Kee Co. Ltd.  
 Legend Creative  
 LINGage Counselling and Career Development Center Ltd.  
 LinkedIn Corporation  
 Link-Pro CPA Ltd.  
 Living Stone Printing Co. Ltd.  
 Long Benefit Enterprises Ltd.  
 Luen Thai Holdings Ltd.  
 Luk King Cleaning Service Ltd.  
 Mainetti (HK) Ltd.  
 Man Tak Metal Co. Ltd.  
 Maritime Square  
 Master Edutainment Ltd.  
 Mayer Brown  
 McKinsey & Company  
 Media Explorer Ltd.  
 Media Pro Ltd.  
 Mega Nice Ltd.  
 Memorigin Watch Co. Ltd.  
 Meta  
 MF Jebsen Group  
 Midland Financial Group Ltd.  
 Mis' Garden  
 Mitsubishi Electric (Hong Kong) Ltd.  
 Mr. Choi Veg  
 mReferral Mortgage Brokerage Services  
 MTR Corporation Ltd.  
 My Beloved Florist  
 Nelson Jewellery Arts Co. Ltd.  
 New Idea Office Supplies  
 New Verdure Printing & Design  
 New World Development Co. Ltd.  
 Ngong Ping 360 Ltd.  
 O! Evelyn (HK) Ltd.  
 Ocean Muay Thai & Fitness  
 Ocean Three Development Ltd.  
 Omni Art  
 One & Associates Valuers Ltd., The  
 One Cool Pictures Ltd.  
 OnLux Beauty Ltd.  
 Orient Overseas Container Line Ltd.  
 P&P Dental and Medical Sciences Ltd.  
 P. C. Woo & Co.  
 Pacific Sense Enterprises Ltd.  
 PACO Communications Ltd.  
 Palo Alto Networks  
 Parkland Music Ltd.  
 Peak Hunter, The  
 Peak Tower Ltd., The  
 Peak Tramways Co., Ltd.  
 Pegasus Developing Kingdom Co. Ltd.  
 People's Place  
 Perfect Medical Health Management Ltd.  
 Play More Ltd.  
 Pocity Engineering Co., Ltd.  
 Pokeguide Ltd.  
 Polytrade Paper Corporation Ltd.  
 Polywin Computer Ltd.

Poon'sPharm (U.S.A.) Medicine Ltd.  
 Potter Industries Ltd.  
 Print100.com  
 Pro-Balance Knives  
 Professional Mediation Consultancy Centre Ltd.  
 Prudential Hong Kong Ltd.  
 Q P Group Holdings Ltd.  
 RaceFit International Co. Ltd.  
 Raymond Lo Feng Shui School  
 Ray's Physiotherapy Clinic  
 Raze Technology Ltd.  
 Reckon System (Asia) Ltd.  
 Richfield Dynamic Technology Ltd.  
 Rising Deco Ltd.  
 River Cam Clinic Management Ltd.  
 Rover International Ltd.  
 Roy Mark (Asia) Ltd.  
 RSM Hong Kong CPA Ltd.  
 Run2gather  
 Sa Sa International Holdings Ltd.  
 Sail Engineering Ltd.  
 Samsung Electronics H.K. Co., Ltd.  
 SBC International  
 SecurePro Technology Security System Ltd.  
 SenseTime  
 Shell Hong Kong Ltd.  
 SHOPLINE Ltd.  
 Sil-Metropole Organisation Ltd.  
 Sino Group  
 Smart Guard Environmental Management Ltd.  
 SME Lab  
 Social Stand Ltd.  
 Sofamark Ltd.  
 Solid Idea Ltd.  
 Soundwill Holdings Ltd.  
 South China Morning Post  
 Southwest Securities International Securities Ltd.  
 Speedy Group Corp. Ltd.  
 Splash Forward Hong Kong Ltd.  
 Starling Labs Ltd.  
 StarPro Agency Ltd.  
 Sun Cupid Technology (HK) Ltd.  
 Sun Ferry Services Co. Ltd.  
 Sun Hung Kai Properties Ltd.  
 Sunpac Tours & Travel Ltd.  
 SuperFarm (Hong Kong) Ltd.  
 Supreme Management Services Ltd.  
 Sushi Yutaka  
 Sustenir Agriculture (Hong Kong) Ltd.  
 Swar Design Co. Ltd.  
 Swire Properties Ltd.  
 Synergis Holdings Ltd.  
 Tam Wing Kun Holdings Ltd.  
 Tech Data Computer Service (Hong Kong) Ltd.  
 Telford International Co. Ltd.  
 Tien Lu Dispensary Ltd.  
 Tomson Group Ltd.  
 Topsoya  
 Trip.com Group Ltd.  
 Tung Yuen Ho Co. Ltd.  
 Twitchy Finger Ltd.  
 U & I Beauty & Slim Ltd.  
 U.C. (Asia) Services Ltd.  
 Ubiquity Creative Group Ltd.  
 UBS  
 UNSUIKYO  
 Urban Group  
 Urban Mushroom HK  
 Vantis Consulting Group Ltd.  
 Venture Partners CPA Ltd.  
 Verdant Asset Management (Asia) Ltd.  
 Verde MAR  
 Victory Securities Co. Ltd.  
 Visionary Agile Spirit Co. Ltd.  
 Vita Green Health Products Co., Ltd.  
 Vitargent (International) Biotechnology Ltd.



Vizz Digital Group  
VTech Holdings Ltd.  
Wa Theater (HK) Co., Ltd.  
Walk In Hong Kong Ltd.  
Wilson Property Management Ltd.  
Wing On Department Stores (Hong Kong) Ltd., The  
World Wide P.C.B. Equipments Co., Ltd.  
Zhenro Properties Group Ltd.  
Zitison Ltd.

### **Government and Related Organisations**

18 District Councils  
18 District Fight Crime Committees  
18 District Youth Programme Committees  
Agriculture, Fisheries and Conservation Department  
Board of Management of the Chinese Permanent Cemeteries, The  
Chinese Temples Committee  
Constitutional and Mainland Affairs Bureau  
Correctional Services Department  
Customs and Excise Department  
Food and Health Bureau (restructured to Health Bureau & Environment and Ecology Bureau from 1 July 2022)  
Home Affairs Department  
Hong Kong Education City Ltd.  
Hong Kong Housing Authority  
Hong Kong Maritime and Port Board  
Hong Kong Police Force  
Hong Kong Science and Technology Parks Corporation  
Hong Kong Science Museum  
Hong Kong Tourism Board  
Hong Kong Trade Development Council  
Investor and Financial Education Council  
Kwai Chung Hospital  
Narcotics Division, Security Bureau  
Office for Film, Newspaper and Article Administration  
Office of the Privacy Commissioner for Personal Data, Hong Kong

Planning Department  
Princess Margaret Hospital  
StartmeupHK  
Tai O Rural Committee  
Transport and Housing Bureau (restructured to Housing Bureau & Transport and Logistics Bureau from 1 July 2022)  
Tseung Kwan O Hospital  
United Christian Hospital  
West Kowloon Cultural District Authority  
Youth Development Commission

### **Universities and Educational Organisations**

Caritas Institute of Higher Education  
Chinese University of Hong Kong, The  
City University of Hong Kong  
Education University of Hong Kong, The  
Gratia Christian College  
Hang Seng University of Hong Kong, The  
HKU SPACE  
Hong Kong Baptist University  
Hong Kong Community College, The Hong Kong Polytechnic University  
Hong Kong Metropolitan University  
Hong Kong Polytechnic University, The  
Hong Kong Shue Yan University  
Hong Kong University of Science and Technology, The  
Lingnan University  
University of Hong Kong, The  
Vocational Training Council

### **Non-governmental Organisations**

Academy of Chinese Studies  
Actors' Family  
City's Treasure  
English-Speaking Union (Hong Kong), The  
Environmental Association

Evangelical Lutheran Church Social Service – Hong Kong  
 Food Grace  
 Fung Ying Seen Koon  
 Good Seed  
 Haw Par Music Foundation Ltd.  
 Hong Kong Arts Centre  
 Hong Kong Chinese Orchestra  
 Hong Kong Design Centre  
 Hong Kong Heritage Conservation Foundation Ltd.  
 Hong Kong Interior Design Association  
 Hong Kong Organic Resource Centre  
 Hong Kong Sheng Kung Hui Welfare Council Ltd.  
 Hong Kong Social Service Professional Alliance of  
 The Guangdong-HK-Macau Greater Bay Area Ltd.  
 Hong Kong Young Academy of Sciences, The  
 International IP Commercialization Council -  
 Hong Kong (GBA) Chapter  
 Jockey Club Museum of Climate Change  
 Kaifong Tour  
 K-Farm  
 Lions Club of Kowloon City  
 Lions Club of Tsuen Wan  
 Project Space  
 Rotary Club of Dragon Hong Kong  
 Save the Children Hong Kong  
 SDSN Hong Kong  
 Sik Sik Yuen  
 Tai O Cultural Association Ltd.  
 Tsung Tsin Mission of Hong Kong Social Service, The  
 Windshield Charitable Foundation  
 Wofoo Social Enterprises

### Funds and Foundations

Angel Investment Foundation  
 Beautiful Walk Charitable Foundation Ltd.  
 C.C. Wu Cultural & Education Foundation Fund Ltd.  
 Centaline Charity Fund Ltd.

D. H. Chen Foundation, The  
 Environment and Conservation Fund  
 HKEX Foundation Ltd.  
 ICBC (Asia) Charitable Foundation Ltd.  
 Jennifer W.F. Liu Charitable Foundation Ltd.  
 JPMorgan Chase Foundation  
 K&K Charity Ltd.  
 Keswick Foundation, The  
 LC Charity Fund  
 LCH Charitable Foundation Ltd.  
 Lee Hysan Foundation  
 Lee Kum Kee Hope as Chef Charitable Foundation Ltd.  
 Lions Club of Tsuen Wan Charity Foundation Ltd.  
 Ng Teng Fong Charitable Foundation  
 Ocean Park Conservation Foundation, Hong Kong  
 Quality Education Fund  
 Rainbow Foundation Ltd.  
 Simon K. Y. Lee Karen's Fund  
 Swire Group Charitable Trust  
 Swire Properties Community Caring Fund  
 Yip Cheung Chun Charitable Fund Ltd.

### Chambers and Associations

Association of I.T. Leaders in Education  
 Association of Retired Elderly Ltd.  
 Federation of Parent-Teacher Associations  
 Golden Bauhinia Women Entrepreneur Association  
 Hong Kong Association of Banks, The  
 Hong Kong Association of Staff and Workers Education  
 and Vocational Training Ltd.  
 Hong Kong Building Inspection Association  
 Hong Kong Cruise & Yacht Industry Association  
 Hong Kong eCommerce Supply Chain Association  
 Hong Kong General Chamber of Young Entrepreneurs, The  
 Hong Kong Internet & eCommerce Association Ltd.  
 Hong Kong Multimedia Design Association Ltd.  
 Hong Kong Resuscitation Society Ltd.

Hong Kong Social Workers Association  
Hong Kong United Youth Science and Technology Association Ltd.  
Institute of Cognitive Therapy  
Junior Chamber International North District (Hong Kong) Ltd.  
Law Society of Hong Kong, The  
Tai O Chinese Chamber of Commerce

### Mainland and Overseas Organisations

British Council  
Deloitte China  
Echigo-Tsumari Art Triennale Executive Committee  
e-PARK  
Foshan Hong Kong-Macao Youth Entrepreneurship Center  
Genius Toy Taiwan Co., Ltd.  
Global Youth Entrepreneur Association  
Guangdong Cheng Gong Law Firm  
Guangdong Youth Federation  
Guangzhou Tianhe Hong Kong and Macau Youth Association  
GungHo Space  
HE Innovation Space  
Hong Kong-Macao Youth Innovation and Entrepreneurial Base in Dongguan Eco-Industrial Park at Songshan Lake  
Huizhou Zhongkai Hong Kong-Macao Youth Entrepreneurship Base  
Jiangmen Talents Start-up Center  
Jiangmen Youth Talents Innovation and Entrepreneurship Base  
KICKEASY GmbH  
LABO Language Laboratory  
Lee Kuan Yew School of Public Policy, National University of Singapore  
Liaison Office of the Central People's Government in the Hong Kong S.A.R.  
Pyeongtaek International Exchange Foundation  
Qianhai Shenzhen-Hong Kong Youth Innovation and Entrepreneur Hub (E-Hub)

Shenzhen Social Commonweal Fund Federation  
Shunde Foundation for Innovation and Entrepreneurship  
Tencent Start Innovation Center  
United Nations Development Programme  
Zhuxi Inno-Valley Science and Technology Park  
中天粵港青創基地  
莞城粵港澳青年創新創業基地

### Individuals or Group Donors & Supporters

Dr. Au Kwok-nin  
Dr. Au Siu-foon  
Dr. Gigi Au-yeung  
Mr. and Mrs. Johnny Au-yeung  
Mr. David Begbie  
Prof. Karim Bettache  
Mr. James Bishop  
The Hon. Mrs. Verina Bokhary, SBS  
Dr. Margaret Burnett  
Mr. Alman Chan Siu-cheuk  
Ms. Clara Chan Ka-man  
Ms. Hayley Chan  
Mr. Chan Ka-ho  
Prof. Keith Chan  
Mr. Chan Kim-cheong  
Ms. Chan Kit-lee  
Mr. Chan Kwok-wing  
Mr. Chan Leong-kau  
Ms. Chan May-ling  
Ms. Miko Chan  
Mr. Vicky Chan  
Mr. Wesley Chan  
Ms. Anny Chang  
Mr. Chau Hiu-chung  
Prof. Albert Chen Hung-ye, GBS JP  
Mr. Clement Cheng  
Ms. Florence Cheng  
Mr. Cheng Ka-kit

Mr. Cheuk Wing-hong  
 Dr. Winnie Cheuk  
 Prof. Anthony Cheung Bing-leung, GBS JP  
 Mr. Jason Cheung  
 Ms. Katherine Cheung  
 Mr. Cheung Kin-sun  
 Mrs. Lisa Cheung  
 Dr. Louis Cheung  
 Mr. Michael Cheung Chun-leung  
 Mr. Nixon Cheung  
 Ms. Cheung Siu-man  
 Mr. Cheung Yam-lung  
 Mr. Ching Kwong-leung  
 Mr. Ching Kwong-wa  
 Ms. Ching Shuk-ling  
 Ms. Bonnie Chiu Lai-yu  
 Ms. Joyce Choi Suk-ling (Choiee)  
 Ms. Choi Tsz-kwan  
 Mrs. Choi Ma Oi-kuen, MH  
 Ms. Chow Ka-wai  
 Ms. Ruby Chow  
 Mr. Choy Chit-shing  
 Mr. Ricky Chu Man-kin  
 Mr. Chu Tsz-wing  
 Ms. Irene Chung Wai-kwan  
 Ms. Laura Cozijnsen  
 Mrs. Olivia Davies  
 Mr. Frank Fan  
 The Hon. Mrs. Rita Fan Hsu Lai-tai, GBM GBS JP  
 Ms. Florence Fung  
 Ms. Fung Man-yi  
 Ms. Fung Shui-yin  
 Ms. Fung Sze-man  
 Mrs. Fung Cheng Wai-yee  
 Ms. Mary Natalia Hau Luen-tung  
 Mr. Jonathan Ho  
 Mr. Kelson Ho Ka-ching  
 Ms. Hui Yin-shan

Ms. Waddhna In  
 Ms. Shathy Jomoddar  
 Mr. Akira Kawasaki  
 Ms. Linka Ke Lin  
 Mr. Kei Sze-fai  
 Dr. Kim Kyungmook  
 Dr. Amy Kong Mang-yee  
 Ms. Samantha Kong  
 Mr. Kwan Chi-kuen  
 Mrs. Karina Kwan  
 Mr. Kwok Kwai-wah  
 Ms. Kwok Siu-ying  
 Mr. Kwok Yui-ham  
 Prof. Veronique Lafon-Vinaiis  
 Mr. Charles Lai  
 Ms. Covil Lai  
 Mr. Jack Lai Shun-chi  
 Ms. Lai Po-shan  
 Ms. Vanesse Lai  
 Mr. Lam Fu-kwai  
 Prof. Lam Hon-ming  
 Mr. Nelson Lam Kwok-tong  
 Mrs. Nina Lam Lee Yuen-bing, MH  
 Prof. Paul Lam Kwan-sing, SBS JP  
 Mr. Paul Lam Wing-on  
 Prof. Simon Lam Shing-kwong  
 Prof. Lam Weng-cheong  
 Mrs. Peggy Lam Pei Yu-dja, GBS OBE JP  
 Mr. David Lan Hong-tsung, GBS ISO JP  
 Prof. Arthur Lau  
 Mr. Benny Lau Siu-tsang  
 Mr. Christopher Lau Kwan  
 Mr. David Lau  
 Mr. George Lau Ka-keung, BBS MH JP  
 Mr. Lau Hei-yuen  
 Ms. Kate Lau  
 Mr. Ken Lau  
 Ms. Lau Yim-mui

Ms. Lau Yuk-yee  
 Ms. Viann Law Wai-ying  
 Mr. Clive Lee  
 Ms. Joyce Lee Kwai-sheung  
 Ms. Lee Ka-man  
 Ms. Marina Lee  
 Dr. Sarah Lee Wai-sze, SBS MH  
 Ms. Shelley Lee Lai-kuen, GBS OBE JP  
 Mr. Stephen Lee Fook-hon  
 Ms. Lee Suk-yin  
 Ms. Tracy Lee  
 Dr. Daren Leung  
 Mr. Edward Leung  
 Dr. the Hon. Elsie Leung Oi-sie, GBM JP  
 Ms. Jessica Leung  
 Mr. Leung Man-fai  
 Ms. Leung Mei-see  
 Ms. Promail Leung Kin-yi  
 Ms. Sindy Leung Sze-man  
 Ms. Vivian Leung  
 Mr. Leung Wai-kin  
 Mr. Leung Wing-yi  
 Ms. Leung Ying-suet  
 Ms. Li Ka-ka  
 Ms. Kinnie Li  
 Ms. Jenny Liu  
 Mr. Teddy Liu Kwok-tai  
 Mr. Henry Lo  
 Mr. Victor Lo Wai-tak  
 Ms. Lok Shui-ping  
 Mr. Luo Kaidi  
 Mr. Ma Tat-sing  
 Dr. Calvin Mak Hoi-kwan  
 Ms. Ansah M. Malik  
 Prof. Gordon Mathews  
 Mr. James Mok Hon-fai  
 Mr. Mok Ka-keung  
 Mr. Ng Chi-kin  
 Mr. Ng Ho-yin  
 Prof. Ng Mee-kam  
 Mr. Wilfred Ng Sau-kei, GBS MH JP  
 Ms. Ngai Hei-sun  
 Ms. Bella Ngoc Hong Vuong  
 Ms. Joyce Nip  
 Mr. Kenro Oshidari  
 Mr. Paklam & Ms. Karman  
 Mr. Pang Che-chung  
 Dr. Pei Qing  
 Mr. Pham Dinh-long  
 Mr. Poon Kai-cheung  
 Mr. Poon Kwok-hui  
 Share for Good initiated by New World Development  
 Mr. Kenneth She  
 Mr. Fred Sheu  
 Mr. Si Chung-siang  
 Mr. Sin So-kan  
 Ms. Sit Po-see  
 Mrs. Susan So Chan Wai-hang, SBS  
 Mr. Gene Soo  
 Prof. Joseph Sung Yun-wing  
 Mr. Ricky Szeto  
 Ms. Annie Tam Kam-lan, GBS JP  
 Mr. Tam Man-kei  
 Mr. Martin Tam & Mrs. May Tam  
 Dr. Billy Tang Ka-jau  
 Ms. Tang Tsui-ying  
 Mr. Tang Yiu-bong  
 Dr. Sabrina Tin  
 Ms. Christina Ting Yuk-chee, GBS JP  
 Ms. Ada To Man-wai  
 Dr. Jennifer Tong  
 Mr. Tsang Chun-wing  
 Mr. Derek Tse Pui-keung  
 Ms. Nancy Tse Sau-ling, JP  
 Mr. Clement Tung  
 Mr. Wai Chi-sing, GBS JP

Mr. George Wan Tsz-ki  
 Dr. Christoph Nedopil Wang  
 Dr. Norah Wang  
 Mr. Adam Wong  
 Ms. Anissa Wong Sean-yee, GBS JP  
 Mr. Brian Wong Chak-fung  
 Mr. Charles Wong  
 Mr. Ernest Wong  
 Ms. Esther Wong  
 Mr. Gary Wong  
 Ms. Grace Wong Wing-heung  
 Mr. Wong Ho-chung  
 Ms. Janet Wong Wing-chen, SBS JP  
 Prof. Wong Kam-fai, MH  
 Mr. Kenrick Wong  
 Mr. Loz Wong  
 Mr. Raymond Wong Hung-chiu, GBS JP  
 Dr. Stephen Wong  
 Mr. Wong Sum-yin  
 Dr. Wong Sze-hung  
 Mr. Wong Sze-lok  
 Mr. Talis Wong  
 Mr. Toby Wong  
 Mr. Samuel Wu Sheung-shau  
 Ms. Yang Kit-suen  
 Mr. David Yen Wai-yin  
 Prof. Yeoh Eng-kiong, GBS OBE JP  
 Ms. Carol Yeung  
 Mr. Yeung Hon-man  
 Mrs. Wendy Yih and Mr. Baldwin Yih  
 Dr. Yip Kam-wing  
 Mr. Yip Ka-tai  
 Prof. Paul Yip Siu-fai, MH  
 Mr. Yip Tsz-lam  
 Ms. Yiu Kit-ching  
 Mr. Yu Ka-sing  
 Ms. Yu Mei-lan  
 Ms. Denise Yue Chung-yee, GBS JP

Dr. Yun Pui-ho  
 Mr. Michael Yung  
 Zilch

Owing to limited space, we regret not being able to include the names of all individual donors and supporters. The Federation would also like to most warmly thank all the volunteers who have assisted in our programmes and activities and to express our gratitude to all the media for promoting our services.

由於篇幅所限，恕未能盡錄所有善長芳名。本會亦謹此向各位曾協助推行服務及活動的義工，衷心致意；並感謝各傳媒機構協力推廣本會服務。